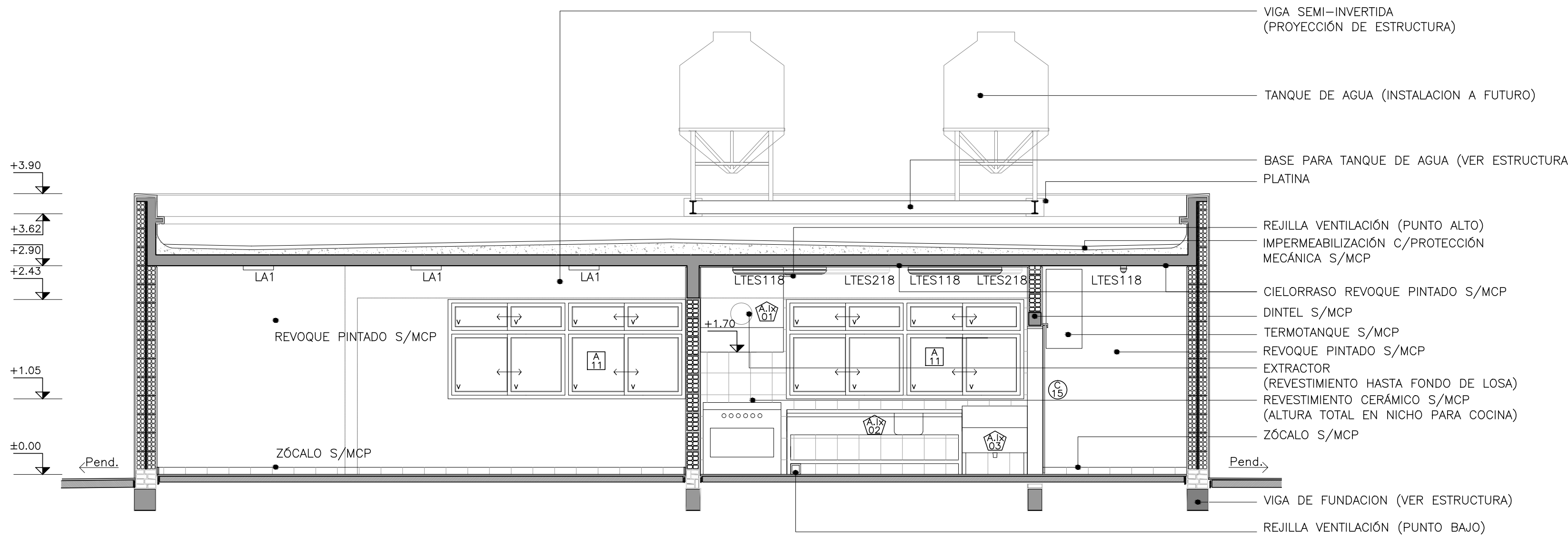
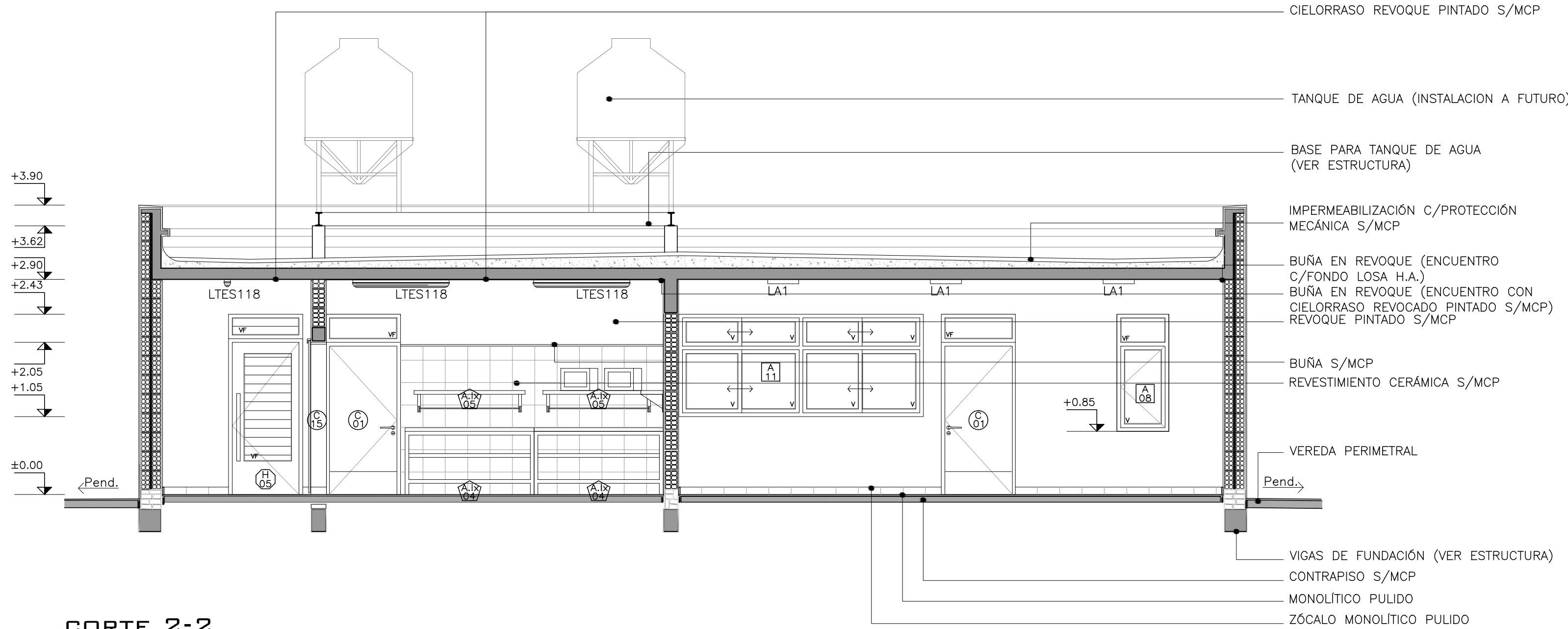


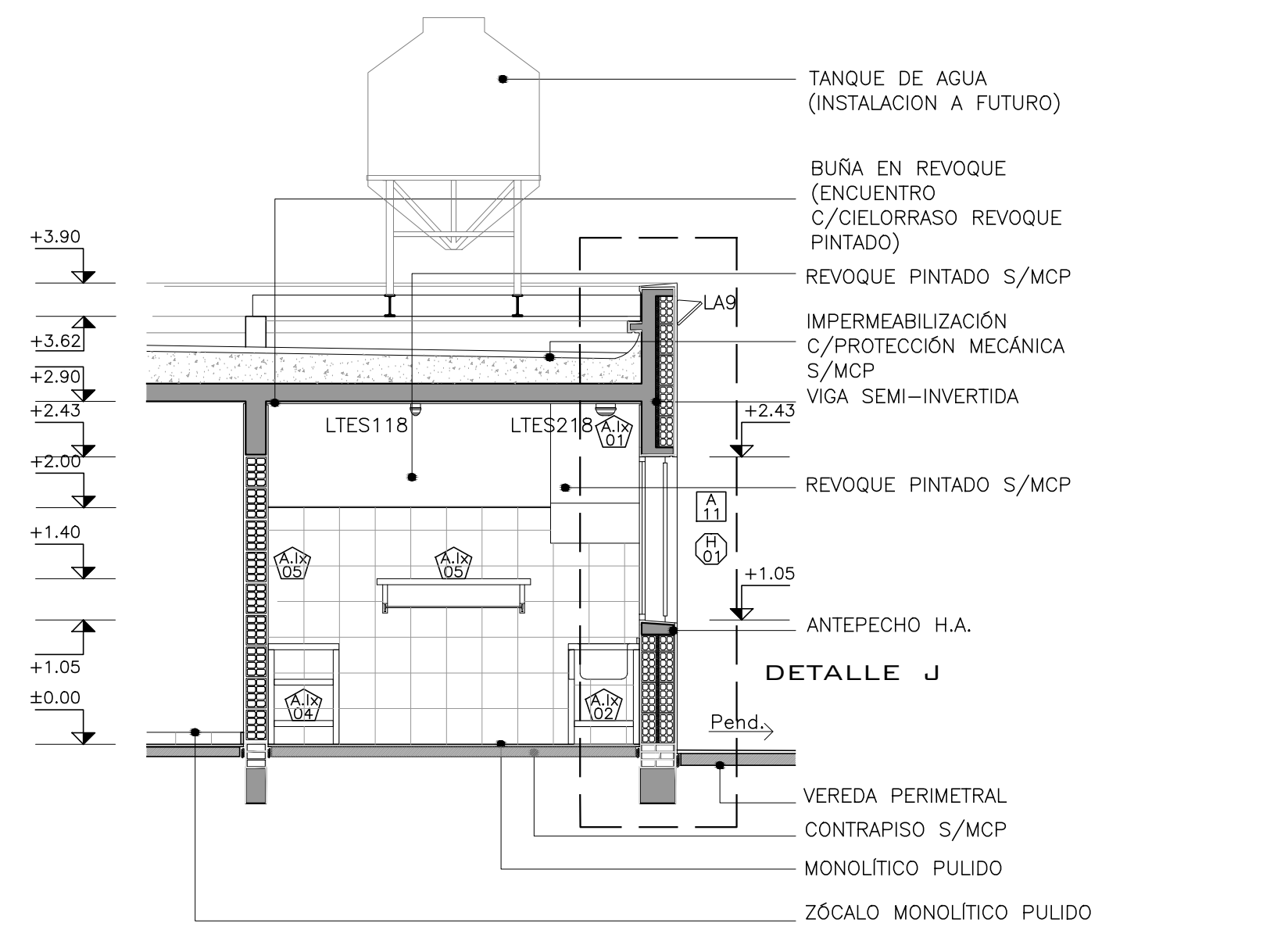
PLANTA ALBAÑILERÍA Y EQUIPAMIENTO - SECTOR 1



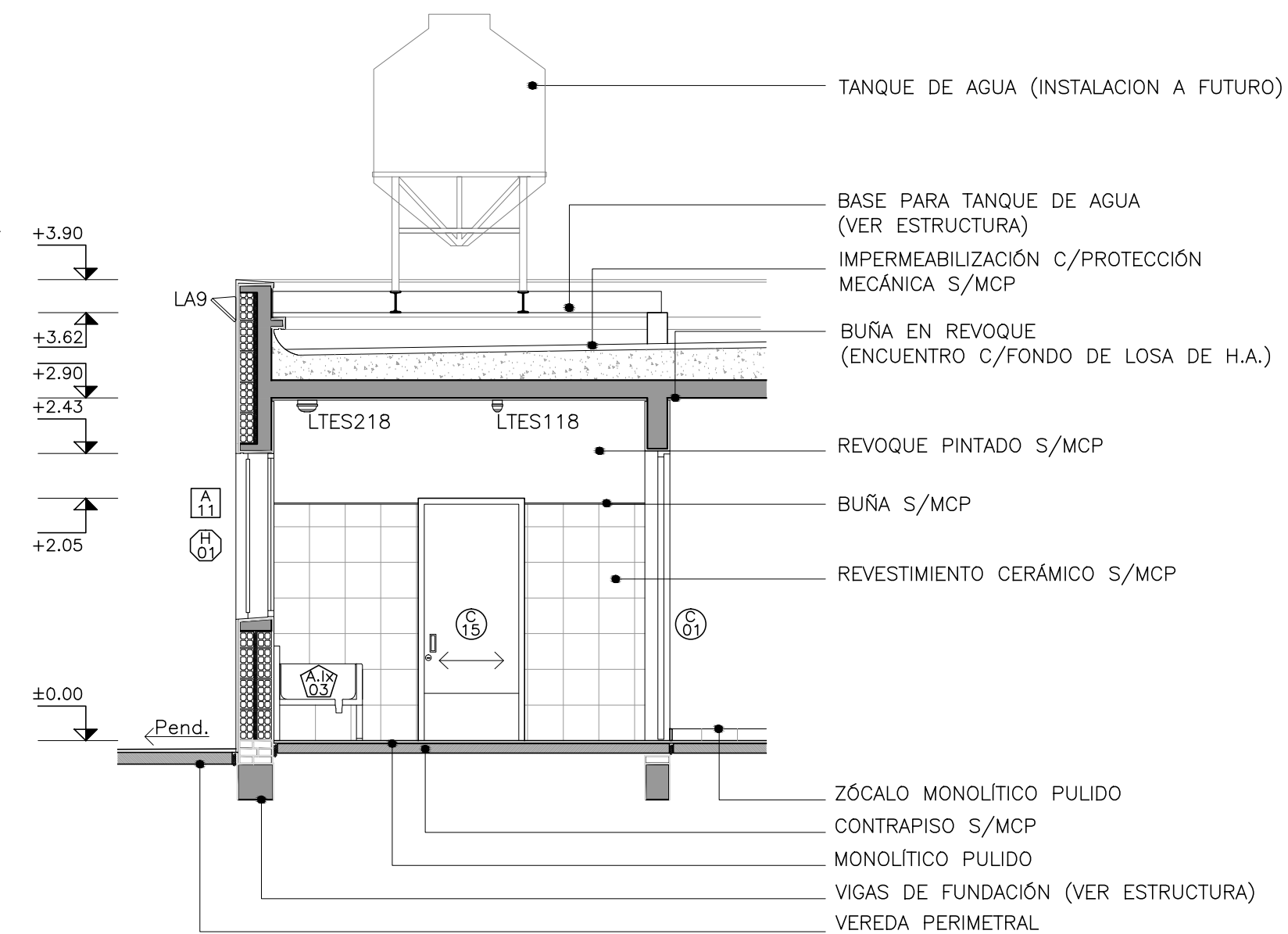
CORTE 1-1



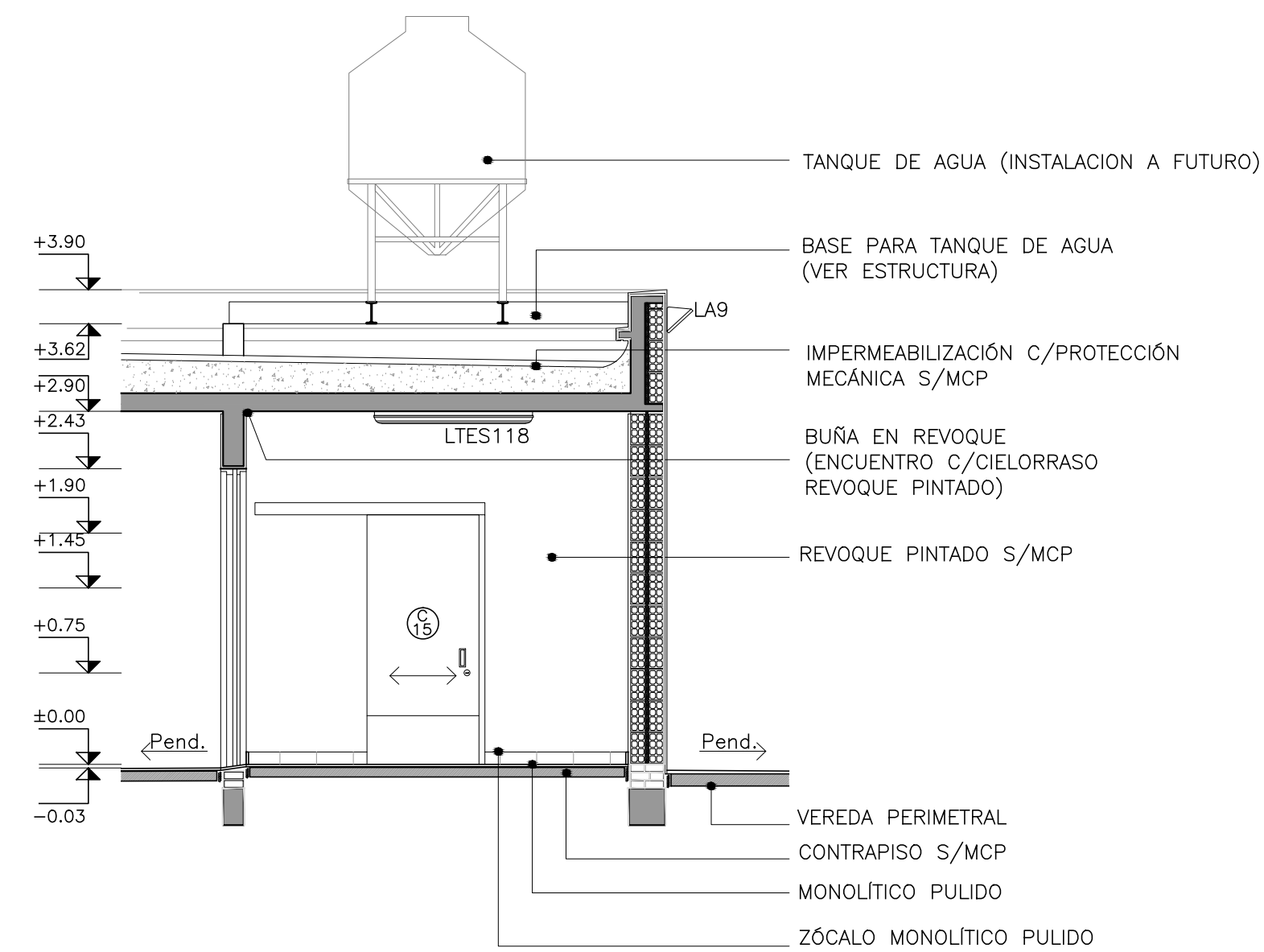
CORTE 2-2



CORTE 3-3



CORTE 4-4



CORTE 5-5

## PLANILLA DE TERMINACIONES

PARED CIELORRASO  
PISO ZOCALO

PARED  
1-REVOQUE Y PINTURA S/MCP  
2-CERAMICA S/MCP

CIELORRASO  
1-HORMIGON VISTO S/MCP  
2-REVOQUE PINTADO S/MCP  
PISO  
1-BALDOSA MONOLITICA PULIDA 40x40  
2-BALDOSA MONOLITICA ANTISLIZANTES  
3-HORMIGON RODILLADO S/MCP  
4-HORMIGON FRATAZADO S/MCP  
5-ADOQUIN HORMIGON

ZOCALO  
1-MONOLITICO 07x40 S/MCP

